

AERO-PROTECT

Airtight sealing solution for exhaust systems-Version: 03/2026

YOUR PARTNER JEREMIAS

The Jeremias Group, headquartered in Wassertrüdingen (Bavaria), is one of the world's leading manufacturers of flue systems and chimney systems in all areas of heat and power generation for industrial and residential applications.

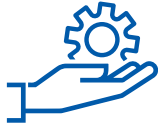
Strong, open and international - that's how we have been presenting ourselves for almost 50 years. Worldwide production sites and sales offices represent entrepreneurial success, ambitious visions and healthy growth.

With innovative products, outstanding service and highly qualified employees, we want to inspire our customers every day and achieve the goal of sustainable joint success.

Currently, our product range includes more than 100 different CE-certified systems for private and commercial applications as well as free-standing steel chimneys with a diameter of up to four meters.

This product overview provides you with a comprehensive overview of characteristics, application and installation of Airtight sealing solutions for exhaust systems.





SERVICE

- Flexible production
- Special solutions tailored to customer needs
- Planning support and designing advice
- Chimney calculation
- Chimney sizing
- Country specific approvals
- Professional customer service
- Free software solutions



QUALITY

- More than 100 CE-certified systems
- CNC laser cutting and stamping technology
- Special stainless steel alloys
- Condensate/gas tight, polished welding seams
- 25-year guarantee
- ISO 9001 certified



INNOVATION

- The largest range of products in the market
- System development with boiler, CHP and stove manufacturers
- In-house development of manufacturing machines
- In-house test facility for stainless steel chimney systems and silencers
- Computer-based simulations





HotSchott DW-AIRTIGHT SEALING COLLARS

HotSchott airtight sealing collars for double-walled stainless steel chimneys consists of a flexible rubber grommet with a long sealing joint that enables a large contact surface to the pipe ensuring a secure seal providing desired air tightness.

This also helps to fulfil the requirements for „blower-door“ tests of buildings. The sealing collars are tested by TÜV-Süd and meet the normative requirements for soot-resistant, double wall Jeremias exhaust systems.

CHARACTERISTICS:

- Suitable for double wall exhaust systems with an insulation thickness of 25 mm and 32 mm in negative pressure
- Working temperature: from 4 °C
- Temperature resistance at the grommet: -20 °C to + 250 °C
- Suitable for external diameters from Ø 180 to 270 mm
- Type 1: suitable for roof pitch up to 30 °
- Type 2: suitable for roof pitch up to 45 °
- Adhesive collar made of Tyvek material
- Suitable and tested for: T400 N1 G



Step 1



Step 2



Step 3



Step 4



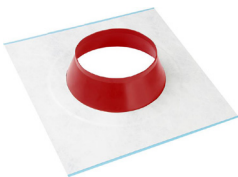
Step 5



Step 6

TYPE 1:

Airtight sealing collars 7-35° for chimneys (up to T 400)



ZUTE2195Ø

Ø	DW-FU / DW-ECO 2.0 DW-VISION	ADHESIVE COLLAR	PRICE NET
180-195	x	400 x 400 mm	84,00 €
200-225	x	400 x 400 mm	92,00 €
230-245	x	580 x 580 mm	99,00 €
250-270	x	580 x 580 mm	105,00 €

TYPE 2:

Airtight sealing collars 30-45° for chimneys (up to T 400)



Ø	DW-FU / DW-ECO 2.0 DW-VISION	ADHESIVE COLLAR	PRICE NET
200-225	x	400 x 400 mm	111,00 €
230-245	x	580 x 580 mm	125,00 €
250-270	x	580 x 580 mm	135,00 €



DW-Airtight CEILING PLATE



Ceiling plate 0-55 ° with vapour barrier seal (450°C/N1).

The ceiling plate with vapour barrier seal is a finished component, which closes the feed-through opening ensuring air and vapour tightness. This also helps to fulfil the requirements for „blower-door“ tests of buildings.

The tested ceiling plates meet the normative requirements for soot-resistant, double wall Jeremias exhaust systems.

CHARACTERISTICS:

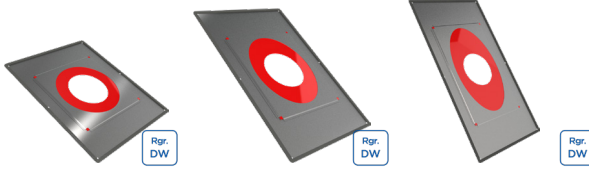
- Suitable for double wall exhaust systems with an insulation thickness of 25 mm and 32 mm in negative pressure
- Finished component, no retrofitting required
- Approved and tested for 450°C N1 G

FOR SYSTEM DW-FU

Ceiling plate 0-20 ° with vapour barrier seal (up to 450°C/N1)

Ceiling plate 21-40 ° with vapour barrier seal (up to 450°C/N1)

Ceiling plate 41-55 ° with vapour barrier seal (up to 450°C/N1)



DW1702Ø		DW1703Ø		DW1704Ø	
080	98,00 €	080	118,00 €	080	137,00 €
100	102,00 €	100	125,00 €	100	146,00 €
115	106,00 €	115	130,00 €	115	153,00 €
130	111,00 €	130	137,00 €	130	157,00 €
150	137,00 €	150	166,00 €	150	179,00 €
160	139,00 €	160	170,00 €	160	183,00 €
180	149,00 €	180	179,00 €	180	195,00 €
200	157,00 €	200	189,00 €	200	203,00 €
225	169,00 €	225	201,00 €	225	215,00 €
250	206,00 €	250	244,00 €	250	265,00 €
300	232,00 €	300	264,00 €	300	295,00 €

FOR SYSTEM DW-ECO 2.0

Ceiling plate 0-20 ° with vapour barrier seal (up to 450°C/N1)

Ceiling plate 21-40 ° with vapour barrier seal (up to 450°C/N1)

Ceiling plate 41-55 ° with vapour barrier seal (up to 450°C/N1)



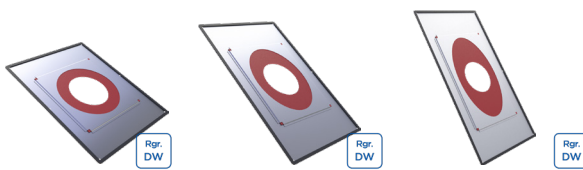
DWECO1702Ø		DWECO1703Ø		DWECO1704Ø	
130	102,00 €	130	126,00 €	130	147,00 €
150	125,00 €	150	154,00 €	150	169,00 €
160	129,00 €	160	158,00 €	160	172,00 €
180	137,00 €	180	166,00 €	180	180,00 €
200	145,00 €	200	174,00 €	200	193,00 €
250	194,00 €	250	232,00 €	250	258,00 €
300	219,00 €	300	254,00 €	300	280,00 €

FOR SYSTEM DW-VISION

Ceiling plate 0-20 ° with vapour barrier seal (up to 450°C/N1)

Ceiling plate 21-40 ° with vapour barrier seal (up to 450°C/N1)

Ceiling plate 41-55 ° with vapour barrier seal (up to 450°C/N1)



DW1702Ø		DW1703Ø		DW1704Ø	
130	111,00 €	130	137,00 €	130	157,00 €
150	137,00 €	150	166,00 €	150	179,00 €
180	149,00 €	180	179,00 €	180	195,00 €
200	157,00 €	200	189,00 €	200	203,00 €
250	206,00 €	250	244,00 €	250	265,00 €
300	232,00 €	300	264,00 €	300	295,00 €



Airtight sealing collars for TWIN-PL/-P AND EW-PPS

TYPE 1:

Fleece butyl pipe sealing collar for exhaust pipes & ventilation pipes up to 45 ° (can be plastered over)

Airtight sealing collar for fast and permanent sealing of the feed-through openings from vapour barriers, roofing membrane, wood-based plates, etc. The sealing collar is provided with a tear-resistant, can be plastered over, fleece-butyl adhesive collar, offers an extremely strong adhesive power.

CHARACTERISTICS:

- Suitable for TWIN-P and PP exhaust systems
- Working temperature: 5 °C to 30 °C
- Temperature resistance at the grommet: -40 °C to 120 °C
- Suitable for outer diameters from Ø 100 to 270 mm
- Suitable for roof pitches up to 45 °
- Can be plastered over adhesive collar made of Fleece butyl
- Approved and tested for: T120-H1-W



Step 1



Step 4



Step 2



Step 5

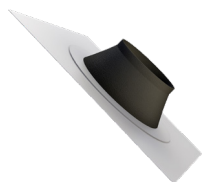


Step 3



Step 6

Airtight sealing collars 7-35° for connection line up to T 200 (can be plastered)



ZUTE21970

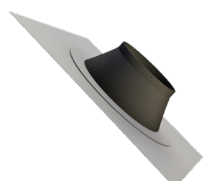
Ø	EW-PPS / TWIN-PL / TWIN-P	ADHESIVE COLLAR	PRICE NET
100-110	x	320 x 320 mm	38,00 €
125-135	x	320 x 320 mm	45,00 €
150-165	x	350 x 350 mm	54,00 €
200-220	x	400 x 400 mm	69,00 €
250-270	x	580 x 580 mm	85,00 €

TYPE 2:

Tyvek - vapour seal collar for exhaust pipes up to 45 ° (cannot be plastered)

In addition, we also offer an economical sealing collar with Tyvek adhesive collar, which is only suitable for vapour barriers in the interior.

Airtight sealing collars 7-35° for chimneys up to T 200 (cannot be plastered)



ZUTE21960

CHARACTERISTICS:

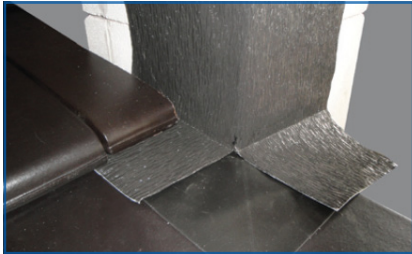
- Working temperature: from - 5 °C
- Temperature resistance at the grommet: -30 °C to 130 °C
- Suitable for outer diameters from Ø 100 to 135 mm
- Suitable for roof pitches up to 45 °
- Adhesive collar made of Tyvek
- Suitable only for interior
- Suitable and tested for: T120-H1-W

Ø	EW-PPS / TWIN-PL / TWIN-P	ADHESIVE COLLAR	PRICE NET
100-110	x	320x320mm	31,00 €
125-135	x	320x320mm	43,00 €



With our shaft sealing collars, chimneys and shafts under and over the roof can be air tight permanently and hence flexible. Thanks to flexible materials, the sealing system adapts perfectly to irregularities such as roof tiles and is easy to install.

ON / ABOVE ROOF



Weather resistant outer corners

UNDER CHIMNEY CASING



Inner corners plastering not possible

INSIDE AREA



Inner corner can be plastered over

ABOVE THE ROOF

External sealing Set
Width: 250 mm

Connection band
Width: 450 mm
Length: 2500 mm

Connection band
Width: 450 mm
Length: 5000 mm

Primer



	ZUTE2200-1	ZUTE2200-2	ZUTE2200-3	ZUTE2200-4	ZUTE2200-5	ZUTE2200-6	ZUTE2200-7	ZUTE2200-8	ZUTE2200-9
Brown	ZUTE2200-1	79,00 €		ZUTE2200-4	116,00 €		ZUTE2200-7	260,00 €	
Terrakotta	ZUTE2200-2	79,00 €		ZUTE2200-5	116,00 €		ZUTE2200-8	260,00 €	
Black	ZUTE2200-3	79,00 €		ZUTE2200-6	116,00 €		ZUTE2200-9	260,00 €	

	ZUTE2202-	
125 ml	ZUTE2202-125	15,00 €
250 ml	ZUTE2202-250	29,00 €
500 ml	ZUTE2202-500	38,00 €

The primer is required for absorbent substrates to create a bonding bridge between the seal and the substrate.

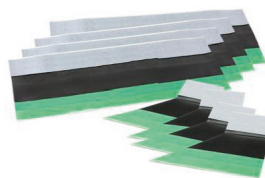
BELOW THE ROOF WITH PLASTER BASE

Shaft sealing for below roof with plaster base
length: 500 mm
Set1

Shaft sealing for below roof with plaster base
length: 750 mm
Set2

Shaft sealing for below roof with plaster base
length: 1000 mm
Set3

Shaft dimension outer in mm



	ZUTE2201-1	ZUTE2201-3	ZUTE2201-5
300x300	78,00 €		
550x550		91,00 €	
800x800			102,00 €

FURTHER INFORMATION:

You can find more detailed information about the Jeremias AERO-PROTECT range on our website, such as installation instructions and videos. Simply take a look: www.jeremias.de/en/aero-protect

GERMANY

Jeremias Abgastechnik GmbH

Opfenrieder Str. 12
D-91717 Wassertrüdingen
Phone: +49 9832 6868-50
E-Mail: info@jeremias.de
www.jeremias.de/en

POLAND
www.jeremias.pl

USA
www.jeremiasinc.com

SPAIN
www.jeremias.es

CROATIA
www.jeremias.hr

ITALY
www.jeremias.it

CZECH REPUBLIC
www.jeremias.cz

FINLAND
www.jeremias.fi

FRANCE
www.jeremias.fr

UNITED KINGDOM
www.jeremias.uk

Jeremias high quality products to be installed only by selected experts.

The expert in your area: