



# System TWIN-GAS

## DESCRIPTION

Concentric stainless steel flue pipe for room-air independent heating appliances

## MATERIAL

Inside: 1.4404 (316L)  
Outside: 1.4301 (304)

## FINISHING

Highly polished

## WALL THICKNESS

Inside: 0.5 mm  
Outside: 0.5 mm

## DIAMETER

100/50 mm and 130/200 mm

## CONNECTION

Socket / bead with special internal, glued-in gasket in the outer tube

## LOCKING BAND/GASKET

Included in the standard scope of delivery of every straight pipe element

## SYSTEM CERTIFICATION

The Jeremias exhaust system TWIN-GAS is already available from many manufacturers of decorative gas fireplaces and gas stoves with their devices system certified and only approved in this combination.

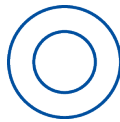
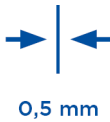
System certifications currently exist with: Glen Dimplex (Faber Chimneys), Bellfires (formerly Interfocus), Element4, Ortal, STUV, Attika, Rais, Camina Schmid, Max Blank, Hoxter, Metalfire

## ORDER CODE

The article code for your order results from:

Article code + Ø (Ex: TWG14100/150).

Please refer to the respective code for deviations.



## CHARACTERISTICS

- Moisture resistant
- Pressure-tight outer tube through glued silicon gasket
- This prevents exchange with room air in the installation room

## APPLICATION AREAS

- Decorative gas fireplaces

## CE MARK NUMBER

0036 CPR 9174 078

## CE CLASSIFICATIONS - DIN EN 1856-1

T400 - N1 - W - V2 - L50040 - O50  
T600 - N1 - W - V2 - L50040 - O50

## CONNECTING PIPE

### CE MARK NUMBER

0036 CPR 9174 090

### CE CLASSIFICATIONS - DIN EN 1856-2

T400 - N1 - W - V2 - L50040 - O100M  
T600 - N1 - W - V2 - L50040 - O100M

Further classifications for special installation variants can be found in our current TWIN-GAS brochure

Cantilevers type I  
350mm

Cantilevers type II  
500mm

Cantilevers Type III  
750mm

Cantilevers type IV  
1030mm

Base plate with 2x1/2  
" exterior nipple  
closing cap and con-  
densate drain at the  
bottom

Base plate for inter-  
mediate support

Condensate collector  
with bottom drain  
1/2" female socket and  
plug screw M10



Rgr.  
DW



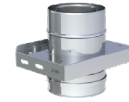
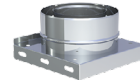
Rgr.  
DW



Rgr.  
DW



Rgr.  
DW



DW391	DW392	DW393	DW407	TWG05Ø	TWG07Ø	TWG2024Ø
117,00 €	132,00 €	161,00 €	264,00 €	100/150 112,00 € 130/200 148,00 €	100/150 156,00 € 130/200 245,00 €	100/150 174,00 € 130/200 195,00 €

Condensate collector  
without drain

Length 1000mm

Length 500mm

Length 250mm

Length 1000mm with  
reinforcement & 4  
lugs

Inspection length (up  
to 600°C/NI)

Wall bracket 50mm



Rgr.  
DW

TWG43Ø	TWG13Ø	TWG14Ø	TWG15Ø	TWG1801Ø	TWG10Ø	ZUWA704Ø
100/150 89,00 € 130/200 107,00 €	100/150 133,00 € 130/200 173,00 €	100/150 95,00 € 130/200 151,00 €	100/150 64,00 € 130/200 117,00 €	100/150 149,00 € 130/200 193,00 €	100/150 133,00 € 130/200 214,00 €	150 44,00 € 200 52,00 €

Wall bracket extensi-  
on l=130mm

Wall bracket extensi-  
on l=200mm

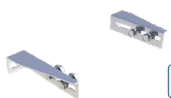
Wall bracket extensi-  
on l=250mm

Wall bracket extensi-  
on l=400mm

Wall bracket 50mm

Adjustable wall  
bracket 50-150mm,  
single-braced

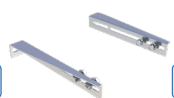
Adjustable wall  
bracket 150-250mm,  
single-braced



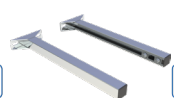
Rgr.  
DW



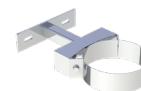
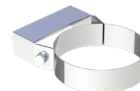
Rgr.  
DW



Rgr.  
DW



Rgr.  
DW



ZUWA891-130	ZUWA891-200	ZUWA891-250	ZUWA706	TW21Ø	TW22Ø	TW23Ø
37,00 €	44,00 €	55,00 €	95,00 €	150 60,00 € 200 66,00 €	150 102,00 € 200 106,00 €	150 117,00 € 200 121,00 €

Adjustable wall bracket 250-360mm, single-braced

Adjustable wall bracket (head/wall part), wall distance from 250mm, single-braced

Extension 30x30mm for TW20 l=1000mm

Extension 30x30mm for TW20 l=500mm

Concentric reducer

End cap with Adaptor FLEX/TWIN-GAS

End cap with Adaptor EW-FU/TWIN-GAS

<b>TW24Ø</b>	<b>TW20Ø</b>	<b>DW86</b>	<b>DW85</b>	<b>TWGRØ-Ø</b>	<b>TWG1276DØ</b>	<b>TWG1732Ø</b>
150 159,00 € 200 165,00 €	150 111,00 € 200 120,00 €	78,00 €	57,00 €	A 130/200 112,00 € B 100/150	100/150 287,00 € 130/200 379,00 €	100/150 320,00 € 130/200 416,00 €

Adaptor screwable EW-FU/EW-FLEX

Adaptor TWIN GAS/shaft

Elbow 15°

Elbow 30°

Elbow 45°

Elbow 90°

Elbow 90°C with support

<b>FD08Ø</b>	<b>ZUWA1618Ø</b>	<b>TWG16Ø</b>	<b>TWG17Ø</b>	<b>TWG18Ø</b>	<b>TWG60Ø</b>	<b>TWG1786Ø</b>
100 57,00 € 130 63,00 €	150 40,00 € 200 57,00 €	100/150 112,00 € 130/200 178,00 €	100/150 112,00 € 130/200 178,00 €	100/150 112,00 € 130/200 178,00 €	100/150 163,00 € 130/200 205,00 €	100/150 210,00 € 130/200 259,00 €

Elbow 90°C with support

Support rail l=350mm

Support rail l=500mm

Support rail l=700mm

Elbow 90° with inspection door (up to 600°C/N1)

Elbow 90° with inspection door and test point (up to 600°C/N1)

Elbow 90° with inspection door and 2 test points

<b>FU061785Ø</b>	<b>FU422</b>	<b>FU422B</b>	<b>FU422C</b>	<b>TWG19Ø</b>	<b>TWG1677Ø</b>	<b>TWG19-2Ø</b>
100 125,00 € 130 133,00 €	112,00 €	126,00 €	152,00 €	100/150 214,00 € 130/200 256,00 €	100/150 247,00 € 130/200 290,00 €	100/150 305,00 € 130/200 336,00 €

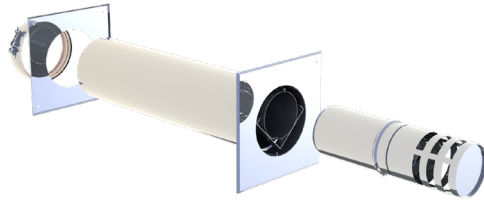
- \*1 Please specify the type of decorative gas fireplace to choose the right connection
- \*2 Use in coordination with the authorized district chimney sweep.

Elbow 90° eccentric T-90° (connection with TWG1619)



TWG1676Ø		TWG317Ø	
100/150	125,00 €	100/150	167,00 €
130/200	187,00 €	130/200	214,00 €

Terminal horizontal (inner tube eccentric)



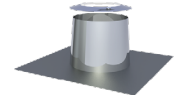
TWG1619Ø	
100/150	153,00 €
130/200	211,00 €

Terminal vertical



TWG272Ø	
100/150	236,00 €
130/200	290,00 €

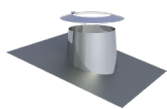
Flat flashing conical with storm collar



TW52Ø	
150	137,00 €
200	148,00 €

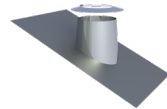
TWIN-GAS

Flashing kit 5-15° lead base with storm collar



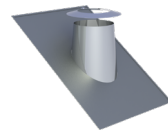
TW53Ø	
150	253,00 €
200	266,00 €

Flashing kit 16-25° lead base with storm collar



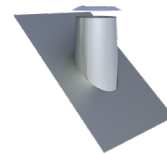
TW59Ø	
150	253,00 €
200	266,00 €

Flashing kit 26-35° lead base with storm collar, cone 150mm



TW38Ø	
150	253,00 €
200	266,00 €

Flashing kit 36-45° lead base with storm collar



TW54Ø	
150	253,00 €
200	291,00 €

Ceiling plate 0°, two-piece



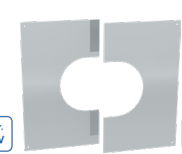
ZUDA074Ø	
150	74,00 €
200	95,00 €

Ceiling plate 0-30°, two-piece



ZUDA99VØ	
150	61,00 €
200	69,00 €

Ceiling plate 31-45° two-piece



ZUDA98VØ	
150	73,00 €
200	82,00 €

Ventilated split ceiling plate 0-30°, two-piece



ZUDA99VHLØ	
150	101,00 €
200	106,00 €

Ventilated split ceiling plate 31-45°, two-piece



ZUDA98VHLØ	
150	112,00 €
200	119,00 €

Adjustable length for connection line 330-420mm



TWG50Ø	
100/150	182,00 €
130/200	184,00 €

Length with test point (up to 600°C/NI)



TWG51Ø	
100/150	98,00 €
130/200	153,00 €

Adaptor for Faber and Bellfires



TWG1634Ø	
100/150	76,00 €
130/200	122,00 €

Adaptor for Attika und Element4



TWG2003Ø	
100/150	76,00 €
130/200	122,00 €

Adaptor for Kalfire



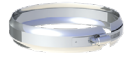
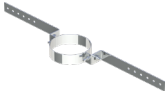
TWG2027Ø	
130/200	120,00 €

Light rafter bracket Storm collar

Locking band (spare part)

Gasket for outer pipe (spare part)

Basic Set TWIN-GAS wall-, ceiling-, roof duct sleeve 1000mm  
1x wall, ceiling and roof duct, 1x fire protection panels, 1x fire protection adhesive 1 kg, 1x insulation with a thickness of 37mm and l = 500mm, 1x mineral wool, content 300g



TW55LØ		KL72Ø		TW45Ø		ALB126Ø		TWG-WDF-SET1-Ø	
150	102,00 €	150	44,00 €	150	19,00 €	150	25,00 €	150	1.858,00 €
200	105,00 €	200	52,00 €	200	25,00 €	200	29,00 €	200	2.256,00 €

Basic Set TWIN-GAS wall-, ceiling-, roof duct sleeve 500mm

1x wall, ceiling and roof duct, 1x fire protection panels, 1x fire protection adhesive 1 kg, 1x insulation with a thickness of 37mm and l = 500mm, 1x mineral wool, content 300g



TWG-WDF-SET2-Ø	
150	986,00 €
200	1.209,00 €



# Connecting pipe TWIN-GAS-VISION

## CONNECTING PIPE TWIN-GAS-VISION

The TWIN-GAS-VISION design system is the ideal solution for a visible connection pipe between the gas stove and the chimney. The black painted (Senotherm 708.123) elements with retracted plug-in ends do not require any locking bands for a stable connection and, with their smooth tubular column, ensure elegance in the living area.



TWIN-GAS

Length 1000mm

Length 500mm

Length 250mm

Inspection length

Elbow 90°

Inspection length with round door and 2 test points

Elbow 90° with inspection door

<b>11-390-TWGV13Ø</b>	<b>11-390-TWGV14Ø</b>	<b>11-390-TWGV15Ø</b>	<b>11-390-TWGV10Ø</b>	<b>11-390-TWGV60Ø</b>	<b>11-390-TWGV10-2Ø</b>	<b>11-390-TWGV19Ø</b>
100/150 135,00 €	100/150 83,00 €	100/150 74,00 €	100/150 124,00 €	100/150 163,00 €	100/150 160,00 €	100/150 244,00 €

Elbow 90° with inspection door and 2 test points

Adjustable length 600-900mm

Length with test point (up to 600°C/NI)

Stove adaptor

Adaptor TWIN-GAS-VISION/TWIN-GAS

Storm collar

<b>11-390-TWGV19-2Ø</b>	<b>11-390-TWGV197Ø</b>	<b>11-390-TWGV51Ø</b>	<b>11-390-TWGV1634Ø</b>	<b>11-390-TWGV930Ø</b>	<b>11-ZUWA1319Ø</b>
100/150 279,00 €	100/150 122,00 €	100/150 82,00 €	100/150 109,00 €	100/150 64,00 €	150 37,00 €

\*1 Please specify the type of decorative gas fireplace to choose the right connection