



Fire protection implementation LUX-ECO

DESCRIPTION

Inexpensive wall, ceiling and roof penetration for insulated flue pipes

MATERIAL

Pipe shell made from non-combustible fiberglass insulation Variotherm

NOMINAL DIAMETER (DN)

Up to max. DN 250 mm

LENGTHS

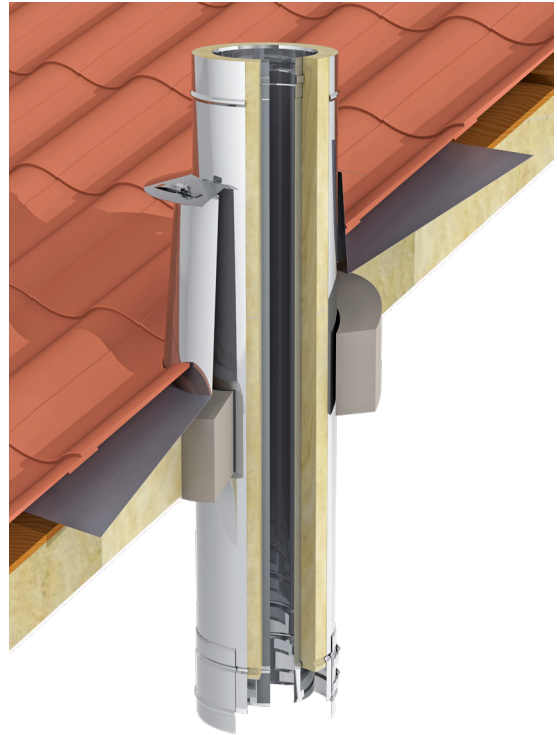
500 mm or 1000 mm, can be shortened to the desired installation length

WALL THICKNESS

Up to max. 360 mm

CEILING THICKNESS

Up to max. 500 mm



CHARACTERISTICS

- Approved for the implementation of insulated flue pipes, connecting pipes and chimneys
- Max. flue gas temperature 400°C (T400)
- Significant reduction in the lateral distance for flue pipe penetrations compared to FeuVo
- Particularly practical for pitched roofs and buildings with external insulation

PARTICULARITIES

- Only 125 mm distance from the stovepipe components to combustible materials
- Max. length when used as a wall duct ≤ 360 mm
- Max. length when used as a ceiling or roof penetration ≤ 500 mm
- Wall, ceiling and roof penetration can be customized to the desired length
- Please note the information in the licence

LICENSE NUMBER

Z - 7.4 - 3469

(for walls up to max. 360 mm, for ceilings and roofs max. 500 mm)



Fire protection implementation LUX-ECO

Artikelbeschreibung	DN Ø insulated exhaust system in mm	Bore of the LUX-ECO in mm	Installation dimensions (outer diameter wall, ceiling, roof penetration)
LUX-ECO50 Wall, ceiling and roof penetration 500 mm	130	210	380
LUX-ECO100 Wall, ceiling and roof penetration 1000 mm	130	210	380
LUX-ECO50 Wall, ceiling and roof penetration 500 mm	150	230	400
LUX-ECO100 Wall, ceiling and roof penetration 1000 mm	150	230	400
LUX-ECO50 Wall, ceiling and roof penetration 500 mm	180	260	430
LUX-ECO100 Wall, ceiling and roof penetration 1000 mm	180	260	430
LUX-ECO50 Wall, ceiling and roof penetration 500 mm	200	280	450
LUX-ECO100 Wall, ceiling and roof penetration 1000 mm	200	280	450
LUX-ECO50 Wall, ceiling and roof penetration 500 mm	250	330	500
LUX-ECO100 Wall, ceiling and roof penetration 1000 mm	250	330	500

Insulated wall/ceiling/roof sleeve Kit with glue and fireproof plate

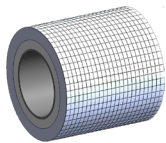
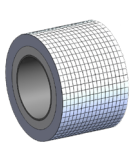
Insulated wall/ceiling/roof sleeve Kit with glue and 2 fireproof plates

Fire proof plate Vermiculit (615x615mm), 20mm wall thickness

Fire proof plate Vermiculit (1050x1050mm), 20mm wall thickness

Fire protection glue (bag 850 g)

Multifunctional knife

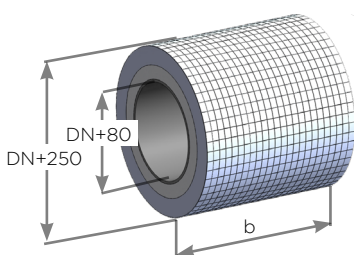


LUX-ECO50Ø		LUX-ECO100Ø		LUX-ECOABS0615X0615	LUX-ECOABS1050X1050	LUX-BSK1	LUXHRC
130	612,00 €	130	1.157,00 €	65,00 €	320,00 €	20,00 €	36,00 €
150	659,00 €	150	1.248,00 €				
180	750,00 €	180	1.414,00 €				
200	822,00 €	200	1.539,00 €				
250	975,00 €	250	1.849,00 €				

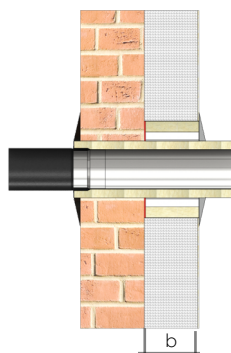
Installation in external wall insulation:

Installation in combustible wall

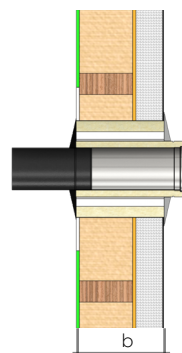
Installation in Roof / pitched roof



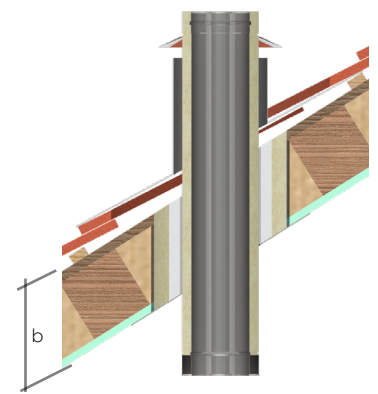
b = max. installation length (see illustrations on the right)



component depth $b \leq 180$ mm



component depth $b \leq 360$ mm



Vertical component depth $b \leq 500$ mm