

## DESCRIPTION

Single wall, pressure-tight flue gas system for condensing boilers with internal gasket

## MATERIAL

1.4404 (316L) / 1.4571 (316Ti)  
Others on request

## FINISHING

Matt

## WALL THICKNESS

0.6 mm  
Others on request

## INSIDE DIAMETER

80 - 600 mm  
Others on request up to 1200 mm

## INSULATION

Insulating shells available as an option

## CONNECTION

Socket / bead with internal special gasket, when used as a connection pipe a locking band is needed

## GASKET

The supplied gasket varies depending on the diameter (EPDM up to 120 °C or silicone up to 200 °C). All possible options can be found in the table on the next page. The prices of the variants not listed in the price list are available upon request.

## ORDER CODE

When ordering, please replace the placeholder " ..." in the article code with the letter for the desired gasket (Standard gasket varies depending on Ø, see table).



## CHARACTERISTICS

- Pressure-tight
- Moisture resistant
- Lightweight material for fast assembly and simple offset
- Optional fixing with locking bands
- Large variety of systems and extensive range of accessories

## APPLICATION AREAS

- Standard heating appliances for oil and gas
- Condensing boilers

## CE MARK NUMBER

0036 CPD 9174 016 (AL-B)  
0036 CPR 9174 012 (ALBI)

## CE CLASSIFICATIONS ACC. TO DIN EN 1856 - 1

**EW-AL-B (external gasket)**  
T200 - P1 - W - V2 - L50060 - 000  
T200 - N1 - W - V2 - L50060 - 000  
**EW-ALBI (internal gasket)**  
with EPDM gasket:  
T120 - P1 - W - V2 - L50060 - 000  
T120 - N1 - W - V2 - L50060 - 000  
with silicone gasket:  
T200 - P1 - W - V2 - L50060 - 000  
T200 - N1 - W - V2 - L50060 - 000

## CONNECTING PIPE

### CE MARK NUMBER

0036 CPR 9174 052

## CE CLASSIFICATIONS ACC. TO DIN EN 1856 - 2

with EPDM gasket:  
T120 - P1 - W - V2 - L50060 - 050M  
T120 - N1 - W - V2 - L50060 - 050M  
with silicone gasket:  
T200 - P1 - W - V2 - L50060 - 050M  
T200 - N1 - W - V2 - L50060 - 050M

POSSIBLE SEALING VARIANTS

Variant	EPDM (ALBI367)			Silicone (ALBI26)		
	A	B	C	D	E	F
	attached	inserted	glued-in	attached	inserted	glued-in
Ø 080 mm	x	x	x	x	x	x
100 mm	x	x	x	x	x	x
115 mm	x	x	x	x	x	x
120 mm	x	x	x	x	x	x
130 mm	x	x	x	x	x	x
140 mm	x	x	x	x	x	x
150 mm	x	x	x	x	x	x
160 mm	x	x	x	x	x	x
180 mm	x	x	x	x	x	x
200 mm	x	x	x	x	x	x
225 mm				x	x	x
250 mm	x		x	x		x
300 mm	x		x	x		x
350 mm	x		x	x		x
400 mm	x		x	x		x
450 mm				x		x
500 mm				x		x
600 mm				x		x

Elbow 87° with support

Support rail l=350mm

Support rail l=500mm

Support rail l=700mm

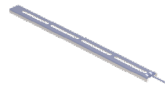
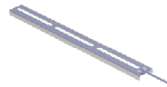
Inspection length with round opening (up to 200°C/ P1)

Stainless steel chimney door 210x140mm with with adj. nozzle and 60mm straight insert, incl. door key

Stainless steel chimney door 300x150mm with inclined insert 60mm, incl. door key



\*1



\*2



\*2

ALBI06...06Ø	FU422	FU422B	FU422C	ALBI06...30Ø	FU0960	FU1060
A 080	146,00 €	112,00 €	126,00 €	A 080	173,00 €	81,00 €
A 100	151,00 €		152,00 €	A 100	188,00 €	134,00 €
A 115	156,00 €			A 115	198,00 €	
A 120	159,00 €			A 120	209,00 €	
A 130	167,00 €			A 130	221,00 €	
A 140	168,00 €			A 140	222,00 €	
A 150	173,00 €			A 150	223,00 €	
A 160	183,00 €			A 160	235,00 €	
A 180	205,00 €			A 180	243,00 €	
A 200	240,00 €			A 200	256,00 €	
D 225	257,00 €			D 225	271,00 €	
C 250	292,00 €			C 250	283,00 €	
C 300	345,00 €			C 300	292,00 €	
C 350	387,00 €			C 350	337,00 €	
C 400	437,00 €			C 400	380,00 €	
F 450	505,00 €			F 450	429,00 €	
F 500	572,00 €			F 500	473,00 €	
F 600	752,00 €			F 600	568,00 €	

•\*1 Can be flexibly extended downwards with length elements

•\*2 Extension of the sliding nozzle. Price per cm

Stainless steel chimney door with ventilation grid 210x140mm and insert 60mm



\*2



\*2

Stainless steel chimney door 300x150mm with inclined insert 60mm, incl. door key



Mounting bracket

Length 1000mm



Length 500mm



Length 250mm



Length 1000mm with 2 lowering loops

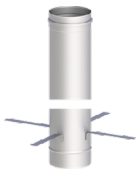


FU5160	FU116060	FU40Ø	ALBI06...02Ø	ALBI06...03Ø	ALBI06...04Ø	ALBI06...05Ø
115,00 €	182,00 €	080 27,00 €	A 080 92,00 €	A 080 62,00 €	A 080 50,00 €	A 080 96,00 €
		100 30,00 €	A 100 97,00 €	A 100 72,00 €	A 100 59,00 €	A 100 103,00 €
		115 32,00 €	A 115 102,00 €	A 115 77,00 €	A 115 62,00 €	A 115 106,00 €
		120 33,00 €	A 120 103,00 €	A 120 78,00 €	A 120 63,00 €	A 120 108,00 €
		130 34,00 €	A 130 107,00 €	A 130 82,00 €	A 130 67,00 €	A 130 112,00 €
		140 35,00 €	A 140 111,00 €	A 140 83,00 €	A 140 68,00 €	A 140 114,00 €
		150 36,00 €	A 150 113,00 €	A 150 84,00 €	A 150 69,00 €	A 150 119,00 €
		160 36,00 €	A 160 123,00 €	A 160 90,00 €	A 160 71,00 €	A 160 127,00 €
		180 37,00 €	A 180 133,00 €	A 180 96,00 €	A 180 77,00 €	A 180 137,00 €
		200 37,00 €	A 200 144,00 €	A 200 100,00 €	A 200 80,00 €	A 200 149,00 €
		225 38,00 €	D 225 156,00 €	D 225 108,00 €	D 225 86,00 €	D 225 162,00 €
		250 38,00 €	C 250 173,00 €	C 250 116,00 €	C 250 90,00 €	C 250 177,00 €
		300 40,00 €	C 300 199,00 €	C 300 122,00 €	C 300 99,00 €	C 300 203,00 €
		350 41,00 €	C 350 224,00 €	C 350 136,00 €	C 350 109,00 €	C 350 229,00 €
		400 43,00 €	C 400 251,00 €	C 400 155,00 €	C 400 121,00 €	C 400 254,00 €
		450 44,00 €	F 450 283,00 €	F 450 182,00 €	F 450 131,00 €	F 450 286,00 €
		500 71,00 €	F 500 326,00 €	F 500 195,00 €	F 500 150,00 €	F 500 331,00 €
		600 89,00 €	F 600 433,00 €	F 600 255,00 €	F 600 200,00 €	F 600 436,00 €

Length 1000mm double female socket



Length 1000mm with mounting bracket



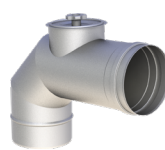
Elbow 87° with inspection door 90° radially offset (up to 200°C/P1)



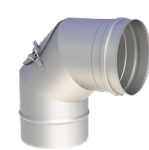
Elbow 87° with inspection door 270° radially offset (up to 200°C/P1)



Elbow 87° with inspection door at the outlet socket (up to 200°C/P1)



Elbow 87° with inspection door and gasket (200°C/P1)



Elbow 90° with inspection door and gasket (200°C/P1)



ALBI06...2438Ø	ALBI06...70Ø	ALBI06...2770Ø	ALBI06...2771Ø	ALBI06...2772Ø	ALBI06...14Ø	ALBI06...15Ø
A 080 116,00 €	A 080 114,00 €	A 080 255,00 €	A 080 255,00 €	A 080 259,00 €	A 080 129,00 €	A 080 129,00 €
A 100 124,00 €	A 100 119,00 €	A 100 262,00 €	A 100 262,00 €	A 100 274,00 €	A 100 135,00 €	A 100 135,00 €
A 115 128,00 €	A 115 121,00 €	A 115 273,00 €	A 115 273,00 €	A 115 279,00 €	A 115 138,00 €	A 115 138,00 €
A 120 130,00 €	A 120 123,00 €	A 120 278,00 €	A 120 278,00 €	A 120 282,00 €	A 120 142,00 €	A 120 142,00 €
A 130 137,00 €	A 130 128,00 €	A 130 308,00 €	A 130 308,00 €	A 130 293,00 €	A 130 147,00 €	A 130 147,00 €
A 140 139,00 €	A 140 131,00 €	A 140 311,00 €	A 140 311,00 €	A 140 296,00 €	A 140 150,00 €	A 140 150,00 €
A 150 144,00 €	A 150 132,00 €	A 150 312,00 €	A 150 312,00 €	A 150 300,00 €	A 150 158,00 €	A 150 158,00 €
A 160 153,00 €	A 160 138,00 €	A 160 317,00 €	A 160 317,00 €	A 160 322,00 €	A 160 171,00 €	A 160 171,00 €
A 180 164,00 €	A 180 151,00 €	A 180 339,00 €	A 180 339,00 €	A 180 339,00 €	A 180 194,00 €	A 180 194,00 €
A 200 178,00 €	A 200 162,00 €	A 200 388,00 €	A 200 388,00 €	A 200 372,00 €	A 200 228,00 €	A 200 228,00 €
D 225 192,00 €	D 225 175,00 €	D 225 454,00 €	D 225 454,00 €	D 225 396,00 €	D 225 248,00 €	D 225 248,00 €
C 250 209,00 €	C 250 192,00 €	C 250 476,00 €	C 250 476,00 €	C 250 429,00 €	C 250 283,00 €	C 250 283,00 €
C 300 236,00 €	C 300 221,00 €	C 300 557,00 €	C 300 557,00 €	C 300 519,00 €	C 300 361,00 €	C 300 361,00 €
C 350 264,00 €	C 350 242,00 €	C 350 594,00 €	C 350 594,00 €	C 350 571,00 €	C 350 415,00 €	C 350 415,00 €
C 400 291,00 €	C 400 266,00 €	C 400 765,00 €	C 400 765,00 €	C 400 617,00 €	C 400 451,00 €	C 400 451,00 €
F 450 328,00 €	F 450 300,00 €	F 450 874,00 €	F 450 874,00 €	F 450 681,00 €	F 450 506,00 €	F 450 506,00 €
F 500 376,00 €	F 500 346,00 €	F 500 994,00 €	F 500 994,00 €	F 500 768,00 €	F 500 591,00 €	F 500 591,00 €
F 600 492,00 €	F 600 451,00 €	F 600 1.048,00 €	F 600 1.048,00 €	F 600 1.006,00 €	F 600 792,00 €	F 600 792,00 €

Elbow 3°, hand welded

Elbow 15°, hand welded

Elbow 30°, hand welded

Elbow 42°, hand welded

Elbow 45°, hand welded

Elbow 87°, hand welded

Elbow 90°, hand welded



ALBI06...908Ø		ALBI06...17Ø		ALBI06...18Ø		ALBI06...2231Ø		ALBI06...19Ø		ALBI06...22Ø		ALBI06...29Ø	
A 080	57,00 €	A 080	57,00 €	A 080	57,00 €	A 080	57,00 €	A 080	57,00 €	A 080	84,00 €	A 080	84,00 €
A 100	59,00 €	A 100	59,00 €	A 100	59,00 €	A 100	59,00 €	A 100	59,00 €	A 100	92,00 €	A 100	92,00 €
A 115	62,00 €	A 115	62,00 €	A 115	62,00 €	A 115	62,00 €	A 115	62,00 €	A 115	94,00 €	A 115	94,00 €
A 120	63,00 €	A 120	63,00 €	A 120	63,00 €	A 120	63,00 €	A 120	63,00 €	A 120	97,00 €	A 120	97,00 €
A 130	67,00 €	A 130	67,00 €	A 130	67,00 €	A 130	67,00 €	A 130	67,00 €	A 130	105,00 €	A 130	105,00 €
A 140	69,00 €	A 140	69,00 €	A 140	69,00 €	A 140	69,00 €	A 140	69,00 €	A 140	107,00 €	A 140	107,00 €
A 150	74,00 €	A 150	74,00 €	A 150	74,00 €	A 150	74,00 €	A 150	74,00 €	A 150	113,00 €	A 150	113,00 €
A 160	77,00 €	A 160	77,00 €	A 160	77,00 €	A 160	77,00 €	A 160	77,00 €	A 160	125,00 €	A 160	125,00 €
A 180	83,00 €	A 180	83,00 €	A 180	83,00 €	A 180	83,00 €	A 180	83,00 €	A 180	148,00 €	A 180	148,00 €
A 200	93,00 €	A 200	93,00 €	A 200	93,00 €	A 200	93,00 €	A 200	93,00 €	A 200	182,00 €	A 200	182,00 €
D 225	106,00 €	D 225	106,00 €	D 225	106,00 €	D 225	106,00 €	D 225	106,00 €	D 225	200,00 €	D 225	200,00 €
C 250	120,00 €	C 250	120,00 €	C 250	120,00 €	C 250	120,00 €	C 250	120,00 €	C 250	241,00 €	C 250	241,00 €
C 300	160,00 €	C 300	160,00 €	C 300	160,00 €	C 300	160,00 €	C 300	160,00 €	C 300	289,00 €	C 300	289,00 €
C 350	172,00 €	C 350	172,00 €	C 350	172,00 €	C 350	172,00 €	C 350	172,00 €	C 350	334,00 €	C 350	334,00 €
C 400	189,00 €	C 400	189,00 €	C 400	189,00 €	C 400	189,00 €	C 400	189,00 €	C 400	385,00 €	C 400	385,00 €
F 450	210,00 €	F 450	210,00 €	F 450	210,00 €	F 450	210,00 €	F 450	210,00 €	F 450	455,00 €	F 450	455,00 €
F 500	240,00 €	F 500	240,00 €	F 500	240,00 €	F 500	240,00 €	F 500	240,00 €	F 500	526,00 €	F 500	526,00 €
F 600	308,00 €	F 600	308,00 €	F 600	308,00 €	F 600	308,00 €	F 600	308,00 €	F 600	714,00 €	F 600	714,00 €

End cap with storm collar mat

Inspection length l=500mm (up to 200°C/PI)

Adjustable length for connection line 320-460mm with external gasket

Length 200mm with test point (up to 200°C/PI)

Length 200mm with drain for horizontal installation and 1/2" nozzle

Adjustable elbow 0-45° with external gasket

Adjustable elbow 0-90° with external gasket



FU25Ø		ALBI06...113DØ		ALBI06...114DØ		ALBI06...112Ø		ALBI06...111Ø		ALBI06...21DØ		ALBI06...101DØ	
080	78,00 €	A 080	170,00 €	A 080	177,00 €	A 080	93,00 €	A 080	86,00 €	A 115	101,00 €	A 115	177,00 €
100	80,00 €	A 100	172,00 €	A 100	179,00 €	A 100	95,00 €	A 100	95,00 €	A 130	111,00 €	A 130	192,00 €
115	82,00 €	A 115	174,00 €	A 115	182,00 €	A 115	97,00 €	A 115	97,00 €	A 150	117,00 €	A 150	195,00 €
120	83,00 €	A 120	175,00 €	A 120	183,00 €	A 120	98,00 €	A 120	98,00 €	A 180	166,00 €	A 180	271,00 €
130	88,00 €	A 130	180,00 €	A 130	192,00 €	A 130	103,00 €	A 130	103,00 €	A 200	191,00 €	A 200	325,00 €
140	96,00 €	A 140	181,00 €	A 140	199,00 €	A 140	105,00 €	A 140	105,00 €				
150	102,00 €	A 150	185,00 €	A 150	200,00 €	A 150	106,00 €	A 150	107,00 €				
160	110,00 €	A 160	189,00 €	A 160	211,00 €	A 160	108,00 €	A 160	115,00 €				
180	117,00 €	A 180	191,00 €	A 180	222,00 €	A 180	113,00 €	A 180	122,00 €				
200	130,00 €	A 200	212,00 €	A 200	238,00 €	A 200	117,00 €	A 200	128,00 €				
225	137,00 €	D 225	222,00 €	D 225	252,00 €	D 225	126,00 €	D 225	136,00 €				
250	143,00 €	C 250	231,00 €	C 250	264,00 €	C 250	131,00 €	C 250	144,00 €				
300	163,00 €	C 300	273,00 €	C 300	319,00 €	C 300	139,00 €	C 300	159,00 €				
350	175,00 €	C 350	287,00 €	C 350	357,00 €	C 350	152,00 €	C 350	179,00 €				
400	207,00 €	C 400	303,00 €			C 400	167,00 €	C 400	198,00 €				
450	224,00 €	F 450	334,00 €			F 450	182,00 €	F 450	216,00 €				
500	305,00 €	F 500	369,00 €			F 500	198,00 €	F 500	244,00 €				
600	406,00 €	F 600	442,00 €			F 600	244,00 €	F 600	295,00 €				

Adjustable elbow 0-90° with inspection door, internal and external gasket (up to 200°C/P1)

Gasket silicone up to 200°C

Gasket EPDM 120°C

Sealing set external (3 sealing rings made of Viton)

Universal sealing set for boiler outlet and butt joint with gasket and external locking band

Locking band

Cover with clamping mechanism



ALBI06...102DØ		ALBI26Ø		ALBI367Ø		DS3Ø		AL45VØ		FU45Ø		ALBI31Ø	
A 115	182,00 €	080	20,00 €	080	20,00 €	115	108,00 €	080	56,00 €	080	17,00 €	080	69,00 €
A 130	196,00 €	100	21,00 €	100	21,00 €	130	120,00 €	100	57,00 €	100	18,00 €	100	78,00 €
A 150	199,00 €	115	22,00 €	115	22,00 €	150	123,00 €	115	59,00 €	115	19,00 €	115	80,00 €
A 180	303,00 €	120	22,00 €	120	22,00 €	180	126,00 €	120	60,00 €	120	20,00 €	120	87,00 €
A 200	358,00 €	130	25,00 €	130	25,00 €	200	150,00 €	130	63,00 €	130	21,00 €	130	88,00 €
		140	25,00 €	140	25,00 €			140	64,00 €	140	22,00 €	140	89,00 €
		150	25,00 €	150	25,00 €			150	65,00 €	150	25,00 €	150	90,00 €
		160	26,00 €	160	26,00 €			160	67,00 €	160	26,00 €	160	94,00 €
		180	27,00 €	180	27,00 €			180	69,00 €	180	27,00 €	180	95,00 €
		200	29,00 €	200	29,00 €			200	71,00 €	200	29,00 €	200	97,00 €
		225	30,00 €	250	32,00 €			225	74,00 €	225	30,00 €		
		250	32,00 €	300	33,00 €			250	75,00 €	250	32,00 €		
		300	33,00 €	350	35,00 €			300	78,00 €	300	35,00 €		
		350	35,00 €	400	37,00 €			350	94,00 €	350	37,00 €		
		400	37,00 €					400	103,00 €	400	41,00 €		
		450	42,00 €					450	118,00 €	450	51,00 €		
		500	45,00 €							500	72,00 €		
		600	56,00 €							600	107,00 €		

Cover with clamping mechanism

Cover with clamping mechanism for ALBI31

Door with test point

Door with test point

Silicone (up to 400°C)

Lubricant tube 75 ml, chloride free

Ventilation grille 200x200mm



Rgr. ZUAC



Rgr. PP



ALBI31Ø		2B2-ZUAC980Ø		ALBI31AØ		ALBI31AØ		ALBI60		750GLEIOVT		ALBI21	
250	132,00 €	080	32,00 €	150	140,00 €	250	184,00 €		90,00 €		14,00 €		98,00 €
		100	33,00 €	160	141,00 €								
		115	34,00 €	180	142,00 €								
		120	35,00 €	200	147,00 €								
		130	35,00 €										
		140	36,00 €										
		150	36,00 €										
		160	37,00 €										
		180	37,00 €										
		200	42,00 €										
		250	55,00 €										



# System EW-ALBI



Fitting 1/2" with inner thread 1/2" suitable for ZUAC2300, ZUAC2301, ZUAC2302, ZUAC2303 and ZUTE1904

Fitting 1/2" to 1/2" suitable for ZUAC2300, ZUAC2301, ZUAC2302, ZUAC2303 and ZUTE1904

Siphon to the centric P1/M1

Siphon to the right P1/M1

Siphon to the left P1/M1

Trompet siphon with 200mm water trap height incl. 1/2" female socket P1/M1

Force connection sleeve suitable up to 120°C

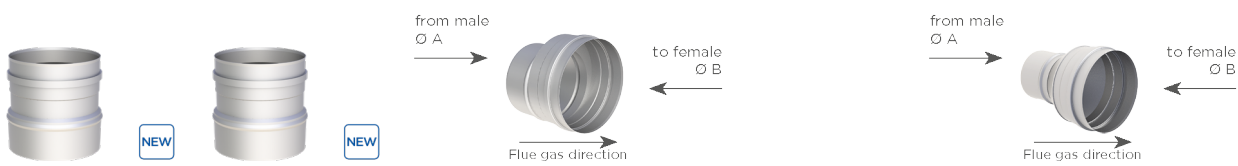
<b>750FITTINGÜ-22 1/2</b>	<b>750FITTINGV-22</b>	<b>ZUAC2300</b>	<b>ZUAC2301</b>	<b>ZUAC2302</b>	<b>ZUAC2303</b>	<b>ZUAC2781Ø</b>
90,00 €	45,00 €	63,00 €	63,00 €	63,00 €	63,00 €	040-065 152,00 € 050-080 183,00 € 075-110 199,00 € 100-133 262,00 € 123-161 244,00 € 160-192 347,00 € 183-226 402,00 €

Transition from PPS to ALBI female socket

Transition from PPS (A) to ALBI female socket (B)

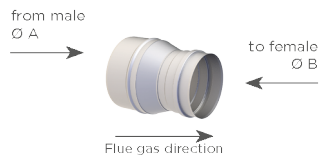
Eccentric Increaser

Increaser



ALBI06...88Ø		ALBI06...88ØØ		ALBIE...ØØEX		ALBIE...ØØ			
A 080 116,00 €	A 110 130,00 €	A A 080 127,00 €	A A 160 194,00 €	A A 080 66,00 €	A A 160 161,00 €	F A 450 342,00 €			
A 100 127,00 €	B 100 130,00 €	B B 100 127,00 €	B B 200 194,00 €	B A 080 125,00 €	B A 180 95,00 €				
A 115 141,00 €	A 110 131,00 €	A A 080 131,00 €	A A 180 194,00 €	A A 100 73,00 €	A A 180 173,00 €				
A 130 153,00 €	B 115 131,00 €	B B 115 131,00 €	D A 180 202,00 €	A A 115 77,00 €	D A 180 173,00 €				
A 150 161,00 €	A 160 161,00 €	A A 100 134,00 €	D B 225 202,00 €	A A 120 77,00 €	D A 200 177,00 €				
A 160 166,00 €	B 150 161,00 €	A A 115 147,00 €	D B 225 202,00 €	A A 130 80,00 €	D B 225 177,00 €				
A 200 193,00 €		A B 130 147,00 €	C A 200 216,00 €	A A 140 85,00 €	D B 225 177,00 €				
C 250 215,00 €		A B 140 155,00 €	C B 250 216,00 €	A A 150 152,00 €	C A 200 185,00 €				
		A A 130 162,00 €	C A 250 245,00 €	A A 160 92,00 €	C A 250 208,00 €				
		A B 150 162,00 €	C B 300 245,00 €		C B 300 208,00 €				
		A A 140 167,00 €			C A 300 234,00 €				
		A B 160 167,00 €			C B 350 234,00 €				
		A A 150 172,00 €			C A 350 266,00 €				
		A B 180 172,00 €			C B 400 266,00 €				
		A A 160 172,00 €			F A 400 301,00 €				
		A B 180 172,00 €			F B 450 301,00 €				

## Decreaser



ALBIR...ØØ								
A	A 080	60,00 €	A	A 150	80,00 €	C	A 350	232,00 €
	B 060		A	B 130		C	B 300	
A	A 100	65,00 €	A	A 160	144,00 €	C	A 400	254,00 €
	B 080		A	B 130		C	B 350	
A	A 115	71,00 €	A	A 160	84,00 €	C	A 450	296,00 €
	B 100		A	B 140		C	B 400	
A	A 120	72,00 €	A	A 180	150,00 €	F	A 500	339,00 €
	B 100		A	B 150		F	B 450	
A	A 130	127,00 €	A	A 180	91,00 €			
	B 100		A	B 160				
A	A 130	74,00 €	A	A 200	158,00 €			
	B 110		A	B 160				
A	A 140	131,00 €	A	A 200	93,00 €			
	B 115		A	B 180				
A	A 140	74,00 €	A	A 250	182,00 €			
	B 120		A	B 200				
A	A 150	134,00 €	C	A 300	207,00 €			
	B 120		C	B 250				