



DESCRIPTION

The designer chimney: Double wall design chimney system made of stainless steel with a smooth tubular column and without locking bands

MATERIAL

Inside: 1.4404 (316L) / 1.4571 (316Ti)

Outside: 1.4301 (304)

Others on request

FINISHING

Brushed

Highly polished: on request,

Painted: reduced discount (see condition agreement)

(Replacement paint for touch up must be ordered separately:

Code: LACK-DOSE, € 17.00 net per 400 ml can)

WALL THICKNESS

Inside / Outside each 0.6 mm

Others on request

INSIDE DIAMETER

130 - 300 mm

INSULATION

Mineral insulation 32.5 mm thick

CONNECTION

Push-fit connection (outer pipe)

ORDER CODE

The article code for your order results from:

Article code + Ø (Example: DWV262180).

Please refer to the respective code for deviations.



CHARACTERISTICS

- Elegant design with a smooth tubular column and brushed finish
- Cylindrical slip-on connector ends on the outer pipe eliminate the need for locking bands
- Resistant to soot fire or moisture

APPLICATION AREAS

- Standard fireplaces for oil, gas and solid fuels (natural wood, coke, peat, coal *)

* except anthracite coal from Ibbenbüren, Germany

CE MARK NUMBER

0036 CPR 9174 009

CE CLASSIFICATIONS ACC. TO DIN EN 1856 - 1

T600 - N1 - D - V3 - L50050 - G50

T400 - N1 - W - V2 - L50050 - O20

T450 - N1 - W - V2 - L50050 - O50

CONNECTING PIPE

CE MARK NUMBER

0036 CPR 9174 048

CE CLASSIFICATIONS ACC. TO DIN EN 1856-2

T600 - N1 - D - V3 - L50050 - G100M

T450 - N1 - W - V2 - L50050 - O50M

Adjustable plates for wall support 50-150mm

Adjustable plates for wall support 150-250mm

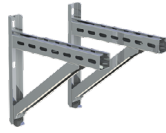
Adjustable plates for wall support 250-360mm

Cantilevers type I 350mm

Cantilevers type II 500mm

Cantilevers Type III 750mm

Cantilevers type IV 1030mm



DWV010		DWV020		DWV490		DWV391		DWV392		DWV393		DWV407	
130	86,00 €	130	127,00 €	130	175,00 €	134,00 €		151,00 €		186,00 €		303,00 €	
150	97,00 €	150	160,00 €	150	219,00 €								
180	127,00 €	180	190,00 €	180	262,00 €								
200	143,00 €	200	318,00 €	200	539,00 €								
250	272,00 €	250	332,00 €	250	572,00 €								
300	302,00 €	300	350,00 €	300	612,00 €								

CALCULATION OF THE MAXIMUM WALL DISTANCE OF WALL SUPPORT AND CROSS BEAM FOR THE SYSTEM DW-VISION

Total length of the wall support 350 mm

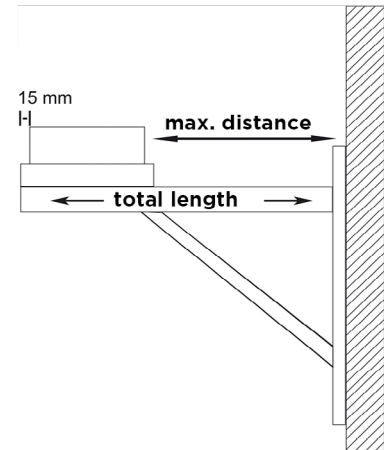
Total length of the wall support 500 mm

Total length of the wall support 750 mm

Total length of the wall support 1030 mm

Component length (e.g. 350 mm Typ I) - 15 mm - (Ø inside + 65 mm) = max. wall distance

DW391		DW392		DW393		DW407	
Inner tube Ø	max. wall clearance in mm	Inner tube Ø	max. wall clearance in mm	Inner tube Ø	max. wall clearance in mm	Inner tube Ø	max. wall clearance in mm
130	140	130	290	130	540	130	820
150	120	150	270	150	520	150	800
180	90	180	240	180	490	180	770
200	70	200	220	200	470	200	750
		250	170	250	420	250	700
				300	370	300	650



Water deflectors for wall support, 2 pieces

Water deflectors for wall support, 2 pieces

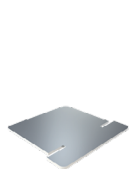
Water deflectors for wall support, 2 pieces

Adjustable support foot 250-690mm with side drain and 1/2" threaded nipple

Adjustable support foot 250-1190mm with side drain and 1/2" threaded nipple

Adjustable support foot 610-1190mm, drain at bottom, 1/2" threaded nipple and door for condensate collector

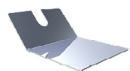
Transparent PVC-pipe Ø 26mm, l=500mm to extend the condensate drain



€ NET



€ NET



€ NET

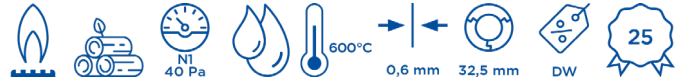


Rgr. ZUAC

ZUTE1425		ZUTE1426		ZUTE1427		DWV030		DWV040		DWV10170		ZUAC2253	
11,00 €		11,00 €		11,00 €		130 263,00 €		130 362,00 €		130 471,00 €		25,00 €	
						150 270,00 €		150 365,00 €		150 475,00 €			
						180 304,00 €		180 383,00 €		180 482,00 €			
						200 327,00 €		200 394,00 €		200 505,00 €			
						250 331,00 €		250 395,00 €		250 508,00 €			
						300 521,00 €		300 555,00 €					



System DW-VISION



Condensate collection bucket

Round base plate and drain and adjustable wall bracket up to 200mm (max. installation height 8m)

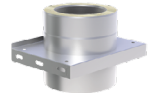
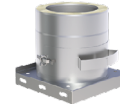
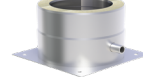
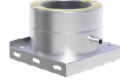
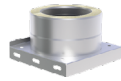
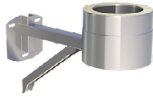
Base plate with condensate drain at the bottom and 1/2" nipple

Base plate with condensate side drain and 1/2" nipple

Base plate for mounting on a bracket with side drain and 1/2" threaded nipple

Base plate with removable soot collector

Base plate for intermediate support



ZUTE1255	DWV384Ø	DWV05Ø	DWV06Ø	DWV66Ø	DWV1592Ø	DWV07Ø
66,00 €	130 168,00 €	130 111,00 €	130 141,00 €	130 137,00 €	130 187,00 €	130 125,00 €
	150 182,00 €	150 114,00 €	150 160,00 €	150 156,00 €	150 207,00 €	150 142,00 €
	180 227,00 €	180 133,00 €	180 188,00 €	180 182,00 €	180 225,00 €	180 164,00 €
	200 243,00 €	200 141,00 €	200 196,00 €	200 193,00 €	200 263,00 €	200 170,00 €
	250 290,00 €	250 152,00 €	250 242,00 €	250 239,00 €	250 304,00 €	250 220,00 €
		300 171,00 €	300 287,00 €	300 276,00 €	300 467,00 €	300 244,00 €

Base plate for chimney raise with round insert l=220mm, max. height from base plate 1,5m

Base plate without drain

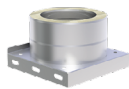
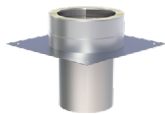
Inspection length (up to 600°C/NI)

Inspection length with integrated base plate and condensate drain at bottom (up to 600°C/NI)

Inspection length Design Plus, indoors only (up to 600°C/NI)

Inspection length with „Design Plus“ door for solid fuels, outdoors (up to 600°C/NI)

Inspection length Design Plus with backstop above inspection and removable soot collector (up to 600°C/NI)



DWV08Ø	DWV09Ø	DWV10Ø	DWV383Ø	DWV381Ø	DWV381AØ	DWV1325Ø
130 126,00 €	130 84,00 €	130 366,00 €	130 423,00 €	130 310,00 €	130 310,00 €	130 388,00 €
150 144,00 €	150 89,00 €	150 383,00 €	150 443,00 €	150 327,00 €	150 327,00 €	150 402,00 €
180 167,00 €	180 98,00 €	180 400,00 €	180 478,00 €	180 342,00 €	180 342,00 €	180 418,00 €
200 175,00 €	200 99,00 €	200 419,00 €	200 498,00 €	200 357,00 €	200 357,00 €	200 434,00 €
250 224,00 €	250 102,00 €	250 451,00 €	250 542,00 €	250 386,00 €	250 386,00 €	250 564,00 €
300 256,00 €	300 110,00 €	300 502,00 €	300 602,00 €	300 428,00 €	300 428,00 €	

Inspection length Design Plus with backstop, wall sleeve for FERRO, 120mm insert and soot collector (up to 600°C/NI)

Inspection length Design Plus with door, base plate and drain at bottom, indoors only (up to 600°C/NI)

Inspection length with integrated base plate and condensate drain, outdoors (up to 600°C/NI)

T-45° with drip nose

T-87° with drip nose

T-90° with drip nose

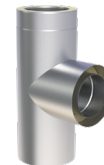
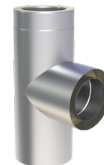
T-87° with cleaning opening on the opposite side, at the same height (up to 600°C/NI)



*2



*1



*2

DWV1805Ø	DWV382Ø	DWV382AØ	DWV12Ø	DWV11Ø	DWV317Ø	DWV421Ø
130 581,00 €	130 377,00 €	130 377,00 €	130 412,00 €	130 263,00 €	130 263,00 €	130 502,00 €
150 617,00 €	150 396,00 €	150 396,00 €	150 442,00 €	150 309,00 €	150 309,00 €	150 548,00 €
180 648,00 €	180 425,00 €	180 425,00 €	180 475,00 €	180 335,00 €	180 335,00 €	180 574,00 €
200 694,00 €	200 443,00 €	200 443,00 €	200 624,00 €	200 417,00 €	200 417,00 €	200 713,00 €
250 884,00 €	250 481,00 €	250 481,00 €	250 773,00 €	250 525,00 €	250 525,00 €	250 823,00 €
	300 535,00 €	300 535,00 €	300 920,00 €	300 659,00 €	300 659,00 €	300 968,00 €

- *1 Only suitable for mounting with a cantilever
- *2 Use in coordination with the authorized district chimney sweep.

T-90° with cleaning opening on the opposite side, at the same height, up to 600°C/NI

Length 1000mm

Length 500mm

Length 250mm

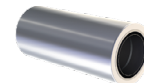
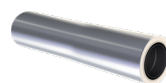
Length 1000mm with adjustable wall sleeve for FERRO

Length 500mm with integrated wall sleeve shortenable for FERRO

Length 1000mm with holder for DW22-1 and DW23-2



*2



DWV309Ø		DWV13Ø		DWV14Ø		DWV15Ø		DWV262Ø		DWV261Ø		DWV1393Ø	
130	502,00 €	130	188,00 €	130	106,00 €	130	76,00 €	130	291,00 €	130	176,00 €	130	297,00 €
150	548,00 €	150	214,00 €	150	119,00 €	150	84,00 €	150	324,00 €	150	195,00 €	150	325,00 €
180	574,00 €	180	241,00 €	180	141,00 €	180	96,00 €	180	370,00 €	180	216,00 €	180	351,00 €
200	713,00 €	200	267,00 €	200	149,00 €	200	111,00 €	200	391,00 €	200	230,00 €	200	380,00 €
250	823,00 €	250	357,00 €	250	191,00 €	250	141,00 €	250	483,00 €	250	279,00 €		
300	968,00 €	300	469,00 €	300	265,00 €	300	205,00 €	300	581,00 €	300	357,00 €		

Length 500mm with holder for DW22-1 and DW23-2

Length 250mm with holder for DW22-1 and DW23-1

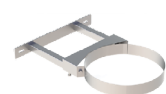
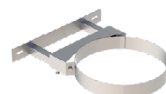
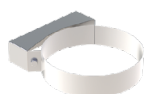
Wall bracket 50mm

Adjustable wall bracket 50-150mm

Adjustable wall bracket 50-150mm

Wall bracket adjustable 50-250mm

Wall bracket adjustable 50-250mm



DWV1392Ø		DWV1406Ø		DWV21Ø		DWV22Ø		DWV22Ø		DWV23Ø		DWV23Ø	
130	217,00 €	130	217,00 €	130	60,00 €	130	97,00 €	250	111,00 €	130	111,00 €	250	125,00 €
150	230,00 €	150	230,00 €	150	61,00 €	150	98,00 €	300	127,00 €	150	112,00 €	300	144,00 €
180	251,00 €	180	251,00 €	180	63,00 €	180	101,00 €			180	117,00 €		
200	260,00 €	200	260,00 €	200	65,00 €	200	105,00 €			200	119,00 €		
				250	73,00 €								
				300	86,00 €								

Adjustable wall bracket 250-360mm

Wall bracket adjustable 250-360mm, double-braced

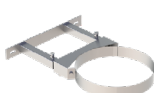
Wall and head piece for wall bracket, wall distance min 250mm

Wall and head piece for wall bracket, wall distance min 250mm

Adjustable wall bracket with joint, 140-300mm

Extension 30x30mm for DWV20 single-braced l=1000mm

Extension 30x30mm for DWV20 single-braced l=500mm



DWV24Ø		DWV24Ø		DWV20Ø		DWV20Ø		DWV24MGØ		DW86		DW85	
130	150,00 €	250	165,00 €	130	111,00 €	250	132,00 €	130	260,00 €		78,00 €		57,00 €
150	152,00 €	300	184,00 €	150	112,00 €	300	153,00 €	150	263,00 €				
180	153,00 €			180	114,00 €			180	265,00 €				
200	160,00 €			200	117,00 €			200	270,00 €				
								250	276,00 €				



System DW-VISION



Adjustable wall bracket Design Plus 50-150mm

Adjustable wall bracket Design Plus 50-250mm

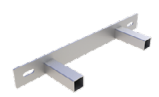
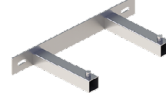
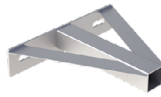
Adjustable wall bracket Design Plus 250-360mm

Wall part of DW20 adjustable for wall bracket 250mm and above, single-braced

Wall part of DW20 adjustable for wall bracket 250mm and above, double-braced

Wall part of DW22 for adjustable wall bracket 50-150mm, single-braced

Wall part of DW22 for adjustable wall bracket 50-150mm, double-braced



DWV3860		DWV3870		DWV3890		DW20-10		DW20-10		DW22-10		DW22-10	
130	97,00 €	130	111,00 €	130	150,00 €	130	55,00 €	250	59,00 €	130	49,00 €	250	51,00 €
150	98,00 €	150	112,00 €	150	152,00 €	150	55,00 €	300	69,00 €	150	49,00 €	300	58,00 €
180	101,00 €	180	117,00 €	180	153,00 €	180	55,00 €			180	49,00 €		
200	105,00 €	200	119,00 €	200	160,00 €	200	55,00 €			200	49,00 €		
250	111,00 €	250	125,00 €	250	165,00 €								
300	127,00 €			300	184,00 €								

Wall part of DW23 for adjustable wall bracket 50-250mm, single-braced

Wall part of DW22 for adjustable wall bracket 50-150mm, double-braced

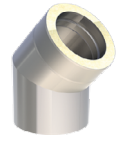
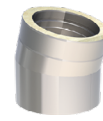
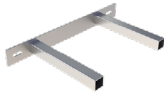
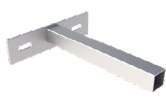
Wall part of DW24 for adjustable wall bracket 250-360mm, single-braced

Wall part of DW24 for adjustable wall bracket 250-360mm, double-braced

Elbow 15°

Elbow 30°

Elbow 45°



DW23-10		DW23-10		DW24-10		DW24-10		DWB160		DWB170		DWB180	
130	49,00 €	250	51,00 €	130	55,00 €	250	59,00 €	130	105,00 €	130	111,00 €	130	117,00 €
150	49,00 €	300	58,00 €	150	55,00 €	300	69,00 €	150	115,00 €	150	120,00 €	150	122,00 €
180	49,00 €			180	55,00 €			180	127,00 €	180	132,00 €	180	134,00 €
200	49,00 €			200	55,00 €			200	132,00 €	200	140,00 €	200	152,00 €
								250	142,00 €	250	147,00 €	250	176,00 €
								300	198,00 €	300	219,00 €	300	262,00 €

Elbow 60°

Elbow 87°

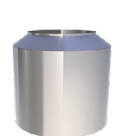
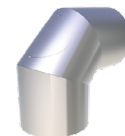
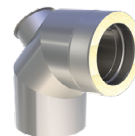
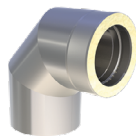
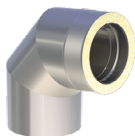
Elbow 90°

Elbow 87° with inspection door (up to 600°/N1)

Elbow 90° with inspection door (up to 600°/N1)

Elbow 90° with inspection door and design lid for solid fuels (inside area) up to 600°C/N1

End cap



DWB840		DWB640		DWB600		DWB670		DWB190		DWB1228		DWB320	
130	174,00 €	130	235,00 €	130	235,00 €	130	351,00 €	130	351,00 €	130	368,00 €	130	98,00 €
150	184,00 €	150	242,00 €	150	242,00 €	150	365,00 €	150	365,00 €	150	377,00 €	150	109,00 €
180	198,00 €	180	263,00 €	180	263,00 €	180	395,00 €	180	395,00 €	180	398,00 €	180	110,00 €
200	227,00 €	200	275,00 €	200	275,00 €	200	434,00 €	200	434,00 €	200	442,00 €	200	115,00 €
250	260,00 €	250	309,00 €	250	309,00 €	250	444,00 €	250	444,00 €	250	451,00 €	250	137,00 €
300	326,00 €	300	400,00 €	300	400,00 €	300	449,00 €	300	449,00 €	300	457,00 €	300	170,00 €

Rain cap

Rain cap with spark protection grid

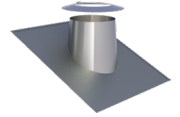
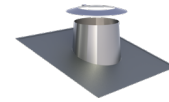
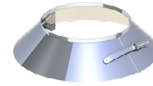
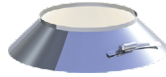
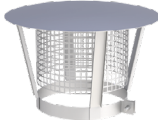
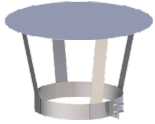
Storm collar

Storm collar with edge

Storm collar with edge and spacers for rear ventilation

Flashing kit 5-15° with storm collar

Flashing kit 16-25° with storm collar



DWV330		DWV33A0		DWV310		DWV3070		DWV28560		DWV810		DWV820	
130	73,00 €	130	133,00 €	130	30,00 €	130	42,00 €	130	52,00 €	130	220,00 €	130	244,00 €
150	78,00 €	150	171,00 €	150	32,00 €	150	43,00 €	150	53,00 €	150	243,00 €	150	270,00 €
180	83,00 €	180	174,00 €	180	33,00 €	180	51,00 €	180	57,00 €	180	274,00 €	180	294,00 €
200	97,00 €	200	220,00 €	200	34,00 €	200	52,00 €	200	59,00 €	200	314,00 €	200	326,00 €
250	117,00 €	250	241,00 €	250	36,00 €	250	55,00 €	250	63,00 €	250	366,00 €	250	373,00 €
300	132,00 €	300	278,00 €	300	45,00 €	300	73,00 €	300	81,00 €	300	394,00 €	300	402,00 €

Flashing kit 26-35° with storm collar

Flashing kit 36-45° with storm collar

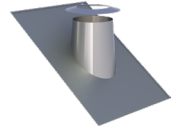
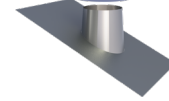
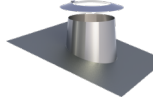
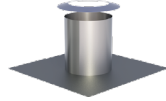
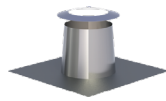
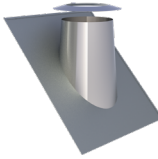
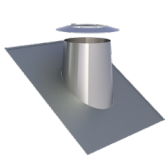
Flat flashing conical with storm collar

Cylindrical flat flashing with storm collar

Flashing kit 5-15° lead base with storm collar

Flashing kit 16-25° lead base with storm collar

Flashing kit 26-35° lead base with storm collar, cone 150mm



DWV390		DWV830		DWV520		DWV520ZY		DWV530		DWV590		DWV380	
130	275,00 €	130	302,00 €	130	130,00 €	130	130,00 €	130	247,00 €	130	247,00 €	130	247,00 €
150	296,00 €	150	322,00 €	150	137,00 €	150	137,00 €	150	267,00 €	150	267,00 €	150	267,00 €
180	314,00 €	180	342,00 €	180	152,00 €	180	152,00 €	180	290,00 €	180	290,00 €	180	290,00 €
200	339,00 €	200	349,00 €	200	189,00 €	200	189,00 €	200	297,00 €	200	297,00 €	200	297,00 €
250	380,00 €	250	390,00 €	250	212,00 €	250	212,00 €	250	334,00 €	250	334,00 €	250	334,00 €
300	413,00 €	300	423,00 €	300	260,00 €	300	260,00 €	300	340,00 €	300	340,00 €	300	340,00 €

Flashing kit 36-45° lead base with storm collar

Flashing kit 5-15° with FastFlash plate elastomer black and storm collar

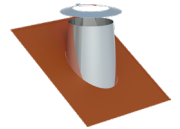
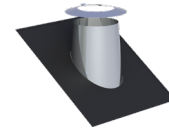
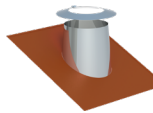
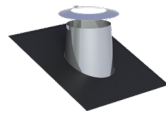
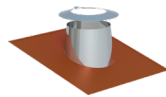
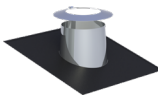
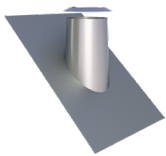
Flashing kit 5-15° with FastFlash plate elastomer red and storm collar

Flashing kit 16-25° with FastFlash plate elastomer collar black and storm collar

Flashing kit 16-25° with FastFlash plate elastomer collar red and storm collar

Flashing kit 26-35° with FastFlash plate elastomer collar black and storm collar

Flashing kit 26-35° with FastFlash plate elastomer collar red and storm collar



DWV540		DWV2556-10		DWV2556-20		DWV2558-10		DWV2558-20		DWV2557-10		DWV2557-20	
130	247,00 €	130	247,00 €	130	247,00 €	130	247,00 €	130	247,00 €	130	247,00 €	130	247,00 €
150	267,00 €	150	267,00 €	150	267,00 €	150	267,00 €	150	267,00 €	150	267,00 €	150	267,00 €
180	290,00 €	180	290,00 €	180	290,00 €	180	290,00 €	180	290,00 €	180	290,00 €	180	290,00 €
200	297,00 €	200	297,00 €	200	297,00 €	200	297,00 €	200	297,00 €	200	297,00 €	200	297,00 €
250	334,00 €	250	334,00 €	250	334,00 €	250	334,00 €	250	334,00 €	250	334,00 €	250	334,00 €
300	340,00 €	300	340,00 €	300	340,00 €	300	340,00 €	300	340,00 €	300	340,00 €	300	340,00 €



System DW-VISION



Flashing kit 36-45° with FastFlash plate elastomer black and storm collar

Flashing kit 36-45° with FastFlash plate elastomer red and storm collar

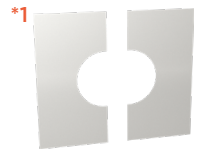
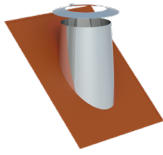
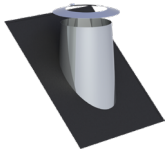
Flashing kit (Silicone) incl. screws and sealing compound, for metal roof, outer Ø 150-300mm (up to 400°C)

Flashing kit (Silicone) incl. screws and sealing compound, for fiber cement corrugated roof, outer Ø 150-300mm (up to 400°C)

Ceiling plate 0° one-piece

Ceiling plate 1-65° one-piece

Ceiling plate 0° two-piece



DWV2551-1Ø		DWV2551-2Ø		ZUAC2700		ZUAC2701		DWV70Ø		DWV71Ø		DWV74Ø	
130	247,00 €	130	247,00 €	288,00 €		288,00 €		130	82,00 €	130	94,00 €	130	96,00 €
150	267,00 €	150	267,00 €					150	84,00 €	150	96,00 €	150	109,00 €
180	290,00 €	180	290,00 €					180	89,00 €	180	99,00 €	180	111,00 €
200	297,00 €	200	297,00 €					200	96,00 €	200	105,00 €	200	125,00 €
250	334,00 €	250	334,00 €					250	119,00 €	250	128,00 €	250	128,00 €
300	340,00 €	300	340,00 €					300	135,00 €	300	151,00 €	300	148,00 €

Ceiling plate 1-65° two-piece

Ceiling plate 0-30° two-piece

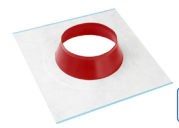
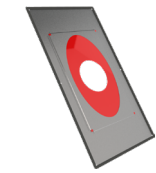
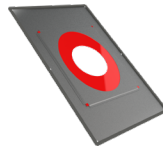
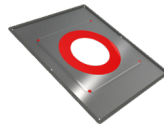
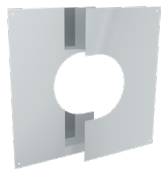
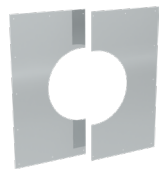
Ceiling plate 31-45° two-piece

Ceiling plate with seal to stop steam connection 0-20° (up to 450°C/NI)

Ceiling plate with seal to stop steam connection 21-40° (up to 450°C/NI)

Ceiling plate with seal to stop steam connection 41-55° (up to 450°C/NI)

Airtight sealing collars 0°-30° for chimneys up to T400



DWV75Ø		DWV99VØ		DWV98VØ		DW1702Ø		DW1703Ø		DW1704Ø		ZUTE2195Ø	
130	105,00 €	130	76,00 €	130	94,00 €	130	107,00 €	130	132,00 €	130	151,00 €	180-195	81,00 €
150	119,00 €	150	78,00 €	150	96,00 €	150	132,00 €	150	160,00 €	150	172,00 €	200-225	88,00 €
180	122,00 €	180	83,00 €	180	99,00 €	180	143,00 €	180	172,00 €	180	188,00 €	230-245	95,00 €
200	140,00 €	200	89,00 €	200	105,00 €	200	151,00 €	200	182,00 €	200	196,00 €	250-270	101,00 €
250	147,00 €	250	115,00 €	250	128,00 €	250	199,00 €	250	235,00 €	250	256,00 €		
300	164,00 €	300	135,00 €	300	151,00 €	300	224,00 €	300	255,00 €	300	285,00 €		

Airtight sealing collars 30°-45° for chimneys up to T400

Adaptor EW male/DW-VISION

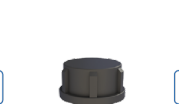
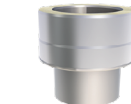
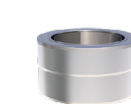
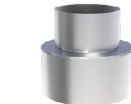
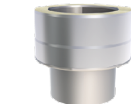
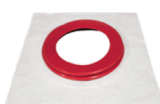
Adaptor DW-VISION/EW male

Adaptor EW-FU/DW-VISION with integrated wall sleeve, straight

Adaptor FERRO/DW-VISION

Isotherm tape 40mm, price per meter

Closing cap plastic for drain 1/2" (up to 200°C)



ZUTE2232Ø		DWV37Ø		DWV37AØ		DWV37GWFØ		DWV37FØ		750ISO40		750ADK1/2	
200-225	107,00 €	130	59,00 €	130	59,00 €	130	114,00 €	130	64,00 €	4,00 €		4,00 €	
230-245	120,00 €	150	61,00 €	150	61,00 €	150	118,00 €	150	66,00 €				
250-270	130,00 €	180	63,00 €	180	63,00 €	180	126,00 €	180	67,00 €				
		200	65,00 €	200	65,00 €	200	137,00 €	200	71,00 €				
		250	69,00 €	250	69,00 €	250	152,00 €	250	74,00 €				
		300	81,00 €	300	81,00 €								

- *1 For wall/ceiling panels, please state the number in °.

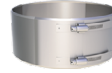
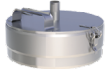
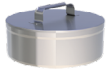
Closing lid with handle for DWV11

Removable soot collector with condensate drain and locking band

Drain/Measuring length 250mm with 1/2" female socket and plug screw

Adjustable length for connection line 320-460mm (up to 600°C/N1)

Locking band as optical protection after cut-off



DWV430		DWV440		DWV510		DWV500		DWV410	
130	87,00 €	130	119,00 €	130	134,00 €	130	197,00 €	130	30,00 €
150	88,00 €	150	126,00 €	150	141,00 €	150	229,00 €	150	32,00 €
180	97,00 €	180	134,00 €	180	160,00 €	180	266,00 €	180	33,00 €
200	106,00 €	200	145,00 €	200	167,00 €	200	310,00 €	200	34,00 €
250	125,00 €	250	193,00 €	250	230,00 €	250	404,00 €	250	35,00 €
300	153,00 €	300	224,00 €	300	280,00 €	300	589,00 €	300	36,00 €