



System DW-BLACK

DESCRIPTION

Black matt powder-coated double wall system made of stainless steel for all standard fireplaces in negative pressure operation, in dry or wet operation

MATERIAL

Inside: L99

Outside: Elo-galvanized

FINISHING

Black matt powder-coated (RAL 9011MB)

Colours:

DW-GREY (RAL 7016M)

DW-WHITE (RAL 9010M)

WALL THICKNESS

Inside / outside each 0.5 mm

INSIDE DIAMETER

130 - 200 mm

Others on request from 80 mm

INSULATION

Mineral insulation with 25 mm thickness

CONNECTION

Plug connection socket / bead with clamping band

LOCKING BAND

Included

ORDER CODE

The article code for your order results from:

Article code + Ø (Ex: 16-290-DWETN05130).

Please refer to the respective code for deviations. If you require different colors, please use the following article codes instead of 16-290-DWETN05...(black):

28-290-DWETN05... DW-GREY

47-290-DWETN05... DW-WHITE



CHARACTERISTICS

- Inexpensive black matt powder-coated exhaust system
- 70 mm wide, recessed locking band
- Resistant to soot fire or moisture

APPLICATION AREAS

- Standard fireplaces for oil, gas and solid fuels (natural wood, coke, peat, coal*)

* excluding anthracite coal from Ibbenbüren, Germany

CE MARK NUMBER

0036 CPR 9174 137

CE CLASSIFICATIONS ACC. TO DIN EN 1856-1

T450 - N1 - W - V2 - L99050 - G80

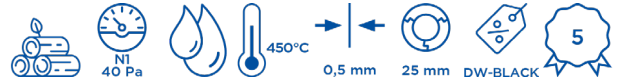
CONNECTING PIPE

CE MARK NUMBER

0036 CPR 9174 138

CE-CLASSIFICATIONS ACC. TO DIN EN 1856-2

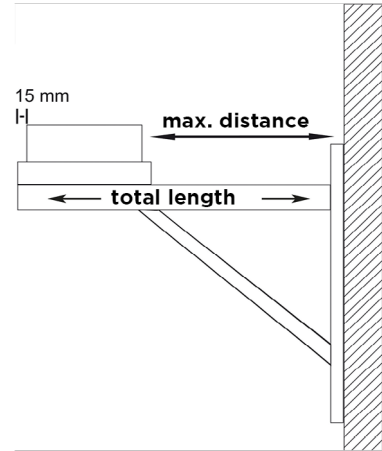
T450 - N1 - W - V2 - L99050 - G170 M



CALCULATION OF THE MAXIMUM WALL DISTANCE OF WALL SUPPORT AND CROSS BEAM FOR THE SYSTEM DW-BLACK

Total length of the wall support 350 mm Total length of the wall support 500 mm Total length of the wall support 750 mm Component length (e.g. 350 mm Typ I) - 15 mm - (Ø inside + 50 mm) = max. wall distance

16-DW391		16-DW392		16-DW393	
Inner tube Ø	max. wall clearance in mm	Inner tube Ø	max. wall clearance in mm	Inner tube Ø	max. wall clearance in mm
130	155	130	305	130	555
150	135	150	285	150	535
180	108	180	255	180	505
200	85	200	235	200	485



Cantilevers type I 350mm Cantilevers type II 500mm Cantilevers Type III 750mm Base plate with condensate drain at the bottom and 1/2" nipple Base plate for intermediate support Base plate for mounting on a bracket with side drain and 1/2" threaded nipple Closing cap plastic for drain 1/2" (up to 200°C)

16-DW391	16-DW392	16-DW393	16-290-DWETN05Ø	16-290-DWETN07Ø	16-290-DWETN66Ø	750ADK1/2
129,00 €	145,00 €	178,00 €	130 105,00 €	130 109,00 €	130 127,00 €	4,00 €
			150 109,00 €	150 120,00 €	150 145,00 €	
			180 124,00 €	180 137,00 €	180 170,00 €	
			200 130,00 €	200 144,00 €	200 178,00 €	

Base plate for chimney raise 450°C/Ni (round insert sleeve), max. height from base plate 1,5m Inspection length (up to 450°C/Ni) Inspection length (up to 600°C/Ni) square door 210x140mm Length 1000mm Length 500mm Length 250mm

16-290-DWETN08Ø	16-290-DWETN2747Ø	16-205-DWETN10Ø	16-290-DWETN2866Ø	16-290-DWETN13Ø	16-290-DWETN14Ø	16-290-DWETN15Ø
130 109,00 €	130 247,00 €	130 309,00 €	130 207,00 €	130 161,00 €	130 96,00 €	130 68,00 €
150 122,00 €	150 301,00 €	150 325,00 €	150 240,00 €	150 183,00 €	150 106,00 €	150 74,00 €
180 142,00 €	180 322,00 €	180 336,00 €	180 263,00 €	180 209,00 €	180 124,00 €	180 83,00 €
200 148,00 €	200 385,00 €	200 352,00 €	200 325,00 €	200 233,00 €	200 130,00 €	200 95,00 €

Length 500mm with integrated wall sleeve shortenable for FERRO

Elbow 15°

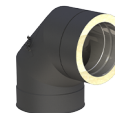
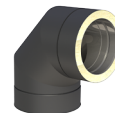
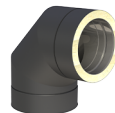
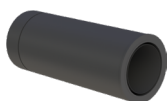
Elbow 30°

Elbow 45°

Elbow 87°

Elbow 90°

Elbow 90° with inspection door



16-290-DWETN1661Ø	16-290-DWETN16Ø	16-290-DWETN17Ø	16-290-DWETN18Ø	16-290-DWETN64Ø	16-290-DWETN60Ø	16-205-DWETN19Ø
130 165,00 €	130 92,00 €	130 97,00 €	130 105,00 €	130 213,00 €	130 213,00 €	130 316,00 €
150 181,00 €	150 104,00 €	150 107,00 €	150 109,00 €	150 219,00 €	150 219,00 €	150 326,00 €
180 188,00 €	180 113,00 €	180 118,00 €	180 120,00 €	180 239,00 €	180 239,00 €	180 343,00 €
200 213,00 €	200 118,00 €	200 124,00 €	200 135,00 €	200 245,00 €	200 245,00 €	200 380,00 €

End cap (up to 450°C/N1)

End pipe for DW-BLACK

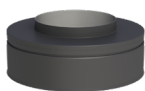
Rain cap

Storm collar

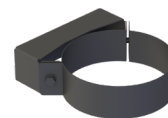
Adaptor EW/DW-BLACK

Adaptor EW/DW-BLACK with integrated wall sleeve straight for FERRO

Wall bracket 50mm



NEW



16-205-DWETN32Ø	16-205-DWETN2904Ø	16-215-DWECO33Ø	16-390-DWECO31Ø	16-290-DWETN37Ø	16-290-DWETN37GWFØ	16-DWECO21Ø
130 50,00 €	130 191,00 €	130 71,00 €	130 29,00 €	130 57,00 €	130 102,00 €	130 50,00 €
150 55,00 €	150 214,00 €	150 76,00 €	150 32,00 €	150 58,00 €	150 107,00 €	150 56,00 €
180 57,00 €	180 239,00 €	180 80,00 €	180 34,00 €	180 61,00 €	180 112,00 €	180 58,00 €
200 58,00 €	200 261,00 €	200 92,00 €	200 36,00 €	200 64,00 €	200 120,00 €	200 60,00 €

Adjustable wall bracket 50-150mm, single-braced

Adjustable wall bracket 50-250mm, single-braced

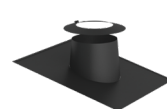
Adjustable wall bracket 250-360mm, single-braced

Wall and head piece for wall bracket, wall distance min 250mm

Extension 30x30mm for DWECO20 single-braced l=1000mm

Extension 30x30mm for DWECO20 single-braced l=500mm

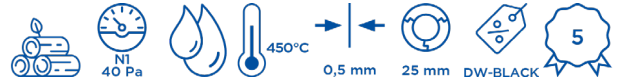
Flashing kit 5-15° with FastFlash plate elastomer black and storm collar



16-DWECO22Ø	16-DWECO23Ø	16-DWECO24Ø	16-DWECO20Ø	16-DW86	16-DW85	16-DWECO2556-1Ø
130 89,00 €	130 107,00 €	130 144,00 €	130 104,00 €	86,00 €	63,00 €	130 238,00 €
150 91,00 €	150 110,00 €	150 145,00 €	150 105,00 €			150 259,00 €
180 94,00 €	180 112,00 €	180 148,00 €	180 107,00 €			180 277,00 €
200 95,00 €	200 117,00 €	200 155,00 €	200 109,00 €			200 285,00 €



System DW-BLACK



Flashing kit 5-15° with FastFlash plate elastomer red and storm collar

Flashing kit 16-25° with FastFlash plate elastomer collar black and storm collar

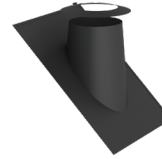
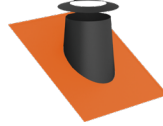
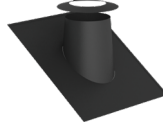
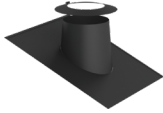
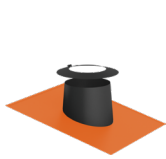
Flashing kit 16-25° with FastFlash plate elastomer collar red and storm collar

Flashing kit 26-35° with FastFlash plate elastomer collar black and storm collar

Flashing kit 26-35° with FastFlash plate elastomer collar red and storm collar

Flashing kit 36-45° with FastFlash plate elastomer black and storm collar

Flashing kit 36-45° with FastFlash plate elastomer red and storm collar



16-DWECO2556-2Ø	16-DWECO2558-1Ø	16-DWECO2558-2Ø	16-DWECO2557-1Ø	16-DWECO2557-2Ø	16-DWECO2551-1Ø	16-DWECO2551-2Ø
130 238,00 €	130 238,00 €	130 238,00 €	130 238,00 €	130 238,00 €	130 238,00 €	130 238,00 €
150 259,00 €	150 259,00 €	150 259,00 €	150 259,00 €	150 259,00 €	150 259,00 €	150 259,00 €
180 277,00 €	180 277,00 €	180 277,00 €	180 277,00 €	180 277,00 €	180 277,00 €	180 277,00 €
200 285,00 €	200 285,00 €	200 285,00 €	200 285,00 €	200 285,00 €	200 285,00 €	200 285,00 €

Ventilated ceiling plate, 1-65°, one-piece

Ceiling plate 0° two-piece

Ceiling plate 1-65° two-piece

Ventilated ceiling plate, 0°, one-piece

Ventilated ceiling plate, 1-65°, one-piece

Ventilated split ceiling plate 0°, two-piece

Ventilated split ceiling plate 1-65°, two-piece



16-DWECO71Ø	16-DWECO74Ø	16-DWECO75Ø	16-DWECO70HLØ	16-DWECO71HLØ	16-DWECO74HLØ	16-DWECO75HLØ
130 86,00 €	130 91,00 €	130 98,00 €	130 120,00 €	130 129,00 €	130 131,00 €	130 139,00 €
150 91,00 €	150 105,00 €	150 116,00 €	150 124,00 €	150 131,00 €	150 143,00 €	150 156,00 €
180 96,00 €	180 107,00 €	180 118,00 €	180 127,00 €	180 135,00 €	180 154,00 €	180 159,00 €
200 98,00 €	200 121,00 €	200 134,00 €	200 131,00 €	200 139,00 €	200 162,00 €	200 175,00 €

Ceiling plate 0-30° two-piece

Ceiling plate 31-45° two-piece

Ceiling plate 31-45°, two-piece

Ceiling plate 0-30°, two-piece

Locking band 2.0

Adjustable rafter bracket, 500-900mm

3-point guy wire bracket



16-DWECO99VØ	16-DWECO98VØ	16-DWECO98VHLØ	16-DWECO99VHLØ	16-DWECO989Ø	16-DWECO55Ø	16-DWECO42Ø
130 73,00 €	130 86,00 €	130 127,00 €	130 114,00 €	130 21,00 €	130 164,00 €	130 44,00 €
150 76,00 €	150 91,00 €	150 131,00 €	150 117,00 €	150 22,00 €	150 176,00 €	150 45,00 €
180 80,00 €	180 96,00 €	180 134,00 €	180 120,00 €	180 25,00 €	180 186,00 €	180 48,00 €
200 86,00 €	200 98,00 €	200 139,00 €	200 127,00 €	200 28,00 €	200 213,00 €	200 49,00 €



€
NET

16-LACK-DOSE

10,00 €