

GERMANY

Jeremias Abgastechnik GmbH
Opfenrieder Str. 12
D-91717 Wassertrüdingen
Phone: +49 9832 6868-50
Mail: welcome@jeremias-group.com
www.jeremias-group.com

POLAND
www.jeremias.pl

USA
www.jeremiasinc.com

SPAIN
www.jeremias.es

CROATIA
www.jeremias.hr

ITALY
www.jeremias.it

CZECH REPUBLIC
www.jeremias.cz

FINLAND
www.jeremias.fi

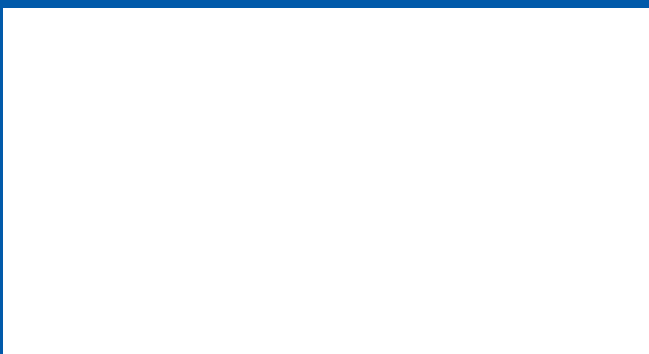
FRANCE
www.jeremias.fr

UNITED KINGDOM
www.jeremias.uk

JEREMIAS IS REPRESENTED IN THE FOLLOWING COUNTRIES:

Austria | Switzerland | Belarus | Belgium | Brazil | Bulgaria | China (Hongkong) | Denmark | Estonia | Greece | Hungary | Ireland | Kazakhstan | Latvia | Liechtenstein | Lithuania | Luxembourg | Malta | Mexico | Moldova | Netherlands | Norway | Portugal | Romania | Saudi Arabia | Serbia | Singapore | Slovakia | Slovenia | South Africa | Sweden | Tunisia | Ukraine | United Arab Emirates

Jeremias high quality products to be installed only by selected experts.





STAINLESS STEEL CHIMNEYS

Overview of Double-Walled Stainless Steel Chimneys

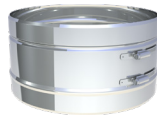
THE CHIMNEY: A VITAL PART OF YOUR HOME

A chimney is an essential component of any home, providing a vital outlet for your stove or fireplace to breathe and function properly. The right stainless steel chimney can be a real eye-catcher for your building, adding both style and value. Jeremias offers a wide range of chimney solutions to suit every need, with products made from stainless steel, steel, copper, ceramic, and plastic.

OUR COMPREHENSIVE RANGE OF PRODUCTS

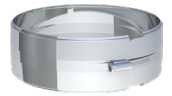
Our extensive product range includes single and double-walled chimneys, as well as flexible liners and accessories. Whether you have a room-sealed or raumluftunabhängige system, we have the perfect solution for you. Our chimneys can be operated under negative or positive pressure, ensuring optimal performance and safety.

DW-FU CLASSIC



- 32.5 mm insulation
- 0.6 mm wall thickness
- Clamping band
- Up to 5 m free overhang
- Socket/bead - Plug connection
- Fittings continuously welded and not folded or spot welded
- Many special solutions possible
- **25 year warranty**

DW-ECO 2.0 VALUE-PRICED



- 25 mm insulation
- 0.5 mm wall thickness
- Clamping band
- Up to 4 m free overhang
- Socket/bead - Plug connection
- **25 year warranty**





EXPERT ADVICE AND SUPPORT

We would be delighted to introduce you to our unique range of chimney products in person. Our experienced team is available to answer any questions you may have about chimneys and help you find the perfect solution for your home.

SURFACES



DW-BLACK

MATT BLACK POWDER COATED



- 25 mm insulation
- 0.5 mm wall thickness
- Clamping band
- Up to 4 m free overhang
- Socket/bead - Plug connection
- **5 year warranty**

DW-VISION

DESIGNER

**NO
CLAMPING
REQUIRED**

- 32.5 mm Insulation
- 0.6 mm Wall Thickness
- No Clamps Required
- Cantilever up to 3 m
- Recessed Socket Connection
- Improved Appearance
- All Fittings Continuously Welded, Not Folded or Spot Welded
- Brushed Surface
- **25 Year Warranty**

